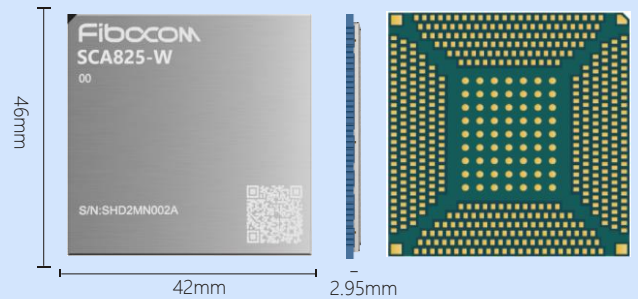


Fibocom SCA825

Smart module supporting Wi-Fi&BT

Key Benefits

- Kryo™ 585 CPU; Adreno™ 650 GPU
- Computing power of up to 15 TOPS
- Support triple display: 4K @ 60 fps Miracast DisplayPort over Type-C
- IEEE 802.11ax, 2 × 2 Wi-Fi MIMO
- Video encode: 4K @ 120 fps; 8K @ 30 fps
- Video decode: 4K @ 240 fps; 8K @ 60 fps



Qualcomm Octa-core



5040 × 2160 @ 60 fps



Wi-Fi 802.11 a/b/g/n/ac/ax



BT 5.1 BLE



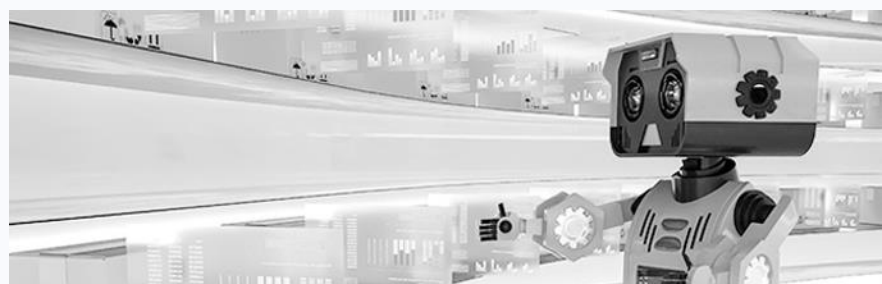
Android10



Professional reference design and technical support

Fibocom SCA825-W is an AI smart module powered by the Qualcomm flagship IoT solution QCS8250, which integrates an octa-core high-performance Kryo™ 585 CPU, Adreno™ 650 GPU, Adreno 995 DPU, Adreno 665 VPU, NPU 230, Hexagon™ DSP, Spectra™ 480 ISP. Comping with powerful performance and rich multimedia functions, the module supports Wi-Fi 6, Bluetooth 5.1 and 2 × 2 Wi-Fi MIMO multi-antenna technology, meeting customers' needs for high computing power in industrial and consumer applications.

SCA825-W integrates a range of peripheral interfaces such as MIPI-DSI, I2S, PCIe, UART, USB, I2C, SPI etc., which greatly expands its application in the M2M field. It can be widely used in video conferences, livestreaming, games, edge computing, robotics, drones, AR/VR and other terminal products and industries.



Smart Wi-Fi module	
Region	Global
Basic Features	
Form Factor	571LGA
CPU	1XGoldP@2.84GHz+ 3XGold@2.42GHz+ 4XSilver@1.8GHz
GPU	Adreno™ 650 GPU
Memory	8GB LPDDR5+128GB UFS
Dimension(mm)	46x42x2.95
Wi-Fi	2.4&5 GHz, Wi-Fi 6, 802.11a/b/g/n/ac/ax, 2 × 2 Wi-Fi MIMO
BT	5.1
OS	Android 10
Power Supply	3.5~4.4V
Operating Tem	-30°C - +75°C
Weight	TBD
Multi-media	
Video Encode	4K @ 120 fps; 8K @ 30 fps
Video Decode	4K @ 240 fps; 8K @ 60 fps
Interfaces	
LCD	2 × 4-lane MIPI DSI 5040 × 2160 @ 60 fps (8 lanes) (2560 × 2560 @ 60 fps) × 2 (4 lanes + 4 lanes) 4K @ 60 fps Miracast DisplayPort v1.4 over Type-C
Cam	6 × 4-lane MIPI CSI 2 × Full IFE + 2 × Lite ISP 2 × PCIe
PCIe	PCIe1: 2-lane, Gen 3 PCIe2: 2-lane, Gen 3
UART	4 x UART up to 3 Mbps
I2C	9 x I2C up to 3.4Mbps
USB	2x USB3.1 USB0 : support USB OTG & DisplayPort v1.4 USB1 : Host only
SDIO	1 x SD 3.0
GPIO	16 GPIOs
Receiver	1 x Mono, AB
Mic	2 x analog microphones
Handset	Stereo CLASS AB
Keys	Power on/off /Volume up /Volume down /Reset
Certification Approvals	
Regulation	RoHS*/CE*/HF*/REACH*
Operator	NA
Industry	NA

* =planning /under development

Fibocom Wireless Inc.

Telephone : +86 755-26733555 Post Code : info@fibocom.com

Address : Floor 10 th,Tower A, Building 6, Shenzhen International Innovation Valley, Dashi 1st Rd, Nanshan, Shenzhen, China

Official website : www.fibocom.com

